

## WINTER EDITION - NEWSLETTER

### From Greg's Desk

Welcome to the first edition of "From Greg's Desk."

GCS has been busy with its team in Christchurch in getting prepared for the long awaited rebuild. Yes we are told it is going to happen. Thank goodness we are not holding our breath, however the good news is that designers and consultants are at the tail end of some great projects that are about to see the light. GCS has been busy working along side geotechnical engineers and designers in readiness.

Our most recent success story has been on installing Screw Piles for the Hydrotherapy Pool project in Wellington via our Screw Pile installers Richardson Drilling Co Ltd that are Palmerston North based. The GCS engineers involved for the design were Kevin O'Connor & Associates Ltd.

The greatest challenge for this project was the fact that it was the first time that a triple helix Screw Pile of progressing diameters had been installed in Wellington. The client's engineers BECA had to be convinced that our proprietary Screw Piles sourced via the United Kingdom were up to their expectation. Mission accomplished!

Although the piles were compact in size, their performance exceeded expectations! We are looking forward to our next Wellington project as a result of the final result.

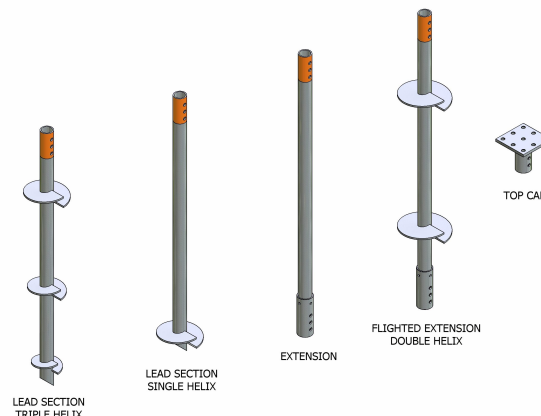
### Some Commonly Asked Questions

**Can Screw Piles be used in shallow foundation situations?**

Yes.

**What do the GCS / geoLOGIC Screw Piles look like and how do they come together?**

Our system is modular. The sections are typically in 2m lengths for ease of handling. Each section is connected together using our orange head bolted solution. No welding is required.



### Can I use Screw Piles for all three DHB Foundation Technical Categories TC1, TC2 and TC3?

Yes – Remember that Screw Piles are an engineered solution. As suppliers we can recommend engineers familiar with our proprietary Screw Pile solution so that the necessary Producer Statements can be furnished. Remember that good foundation design is based on a robust geotechnical report.

### What documentation should I expect for Screw Piles?

1. Producer Statement (PS1) Design
2. Peer / Design Review Only - Producer Statement (PS2) Not Typically Provided
3. Producer Statement (PS4) Construction Review – (comment of piling log records only)
4. Producer Statement (PS3) Construction

### What has the Department of Building & Housing said in its Interim guidance for repairing and rebuilding foundations in TC3?

"The Department's technical guidance for rebuilding and repairing foundations in TC3 aims to provide guidance and solutions that result in compliance with the Building Act 2004 and the Building Code."

**With regard to piling:** “Provided there is a suitable bearing layer that will not liquefy and there is no risk of lateral movement at depth, deep pile foundations can accommodate the weight of heavier or more irregular buildings.

Deep pile foundations involve drilling or driving piles (timber, concrete or steel) into the ground to a suitable bearing layer.”

**Further to recent discussion between GCS and the Department of Building and Housing,** we understand that the section on Screw Piles will be reviewed and we trust amended to include a revised technical specification that will outline amongst other things: shaft size(s) and wall thickness(s).... **watch this space....as we need to remember that this latest document is to be used for guidance only and must also take into consideration %engineered solutions – like the ones applicable for proprietary products distributed by GCS+**

Further information can be obtained from:  
<http://www.dbh.govt.nz/canterbury-earthquake-tc3-technical-guidance-faqs>

### **Pre-Approved Installers**

Technical Drilling Services (TDS) have now based their rig in Christchurch ready for upcoming work.



### **Access to Product in Christchurch**

Maugers Contracting Ltd is ready with GCS / geoLOGIC Screw Piles in Christchurch for the rebuild. Maugers have aligned with GCS as distributors and installers specialising in the 60 to 89 sized Screw Piles.



For larger light industrial and commercial projects we have a number of other pre-approved installers including:

- McMillan Drilling
- Fulton Hogan
- Spiral Drillers
- Richardson Drilling Co.

Let's hope our Canterbury Winter won't be like our previous one as caught on film last year.



Well that's a wrap for this season's newsletter. For all technical enquiries (Including Durability Issues in Ground or Water Environments) or to be connected to your nearest pre-approved installer, please contact me direct.

Cheers till next time.

**Gregory Chawynski**  
**General Manager**  
**Global Construction Solutions**



C +64 27 663 3226

[www.canterburymetalsolutions.co.nz](http://www.canterburymetalsolutions.co.nz)